

December 11<sup>th</sup> 2019



- Biobank Norway
- BBMRI-ERIC

Vegard Marschhäuser  
Coordinator

- Biobank Norway
- BBMRI-ERIC
- Tools/services
- Work Plans (BN3)

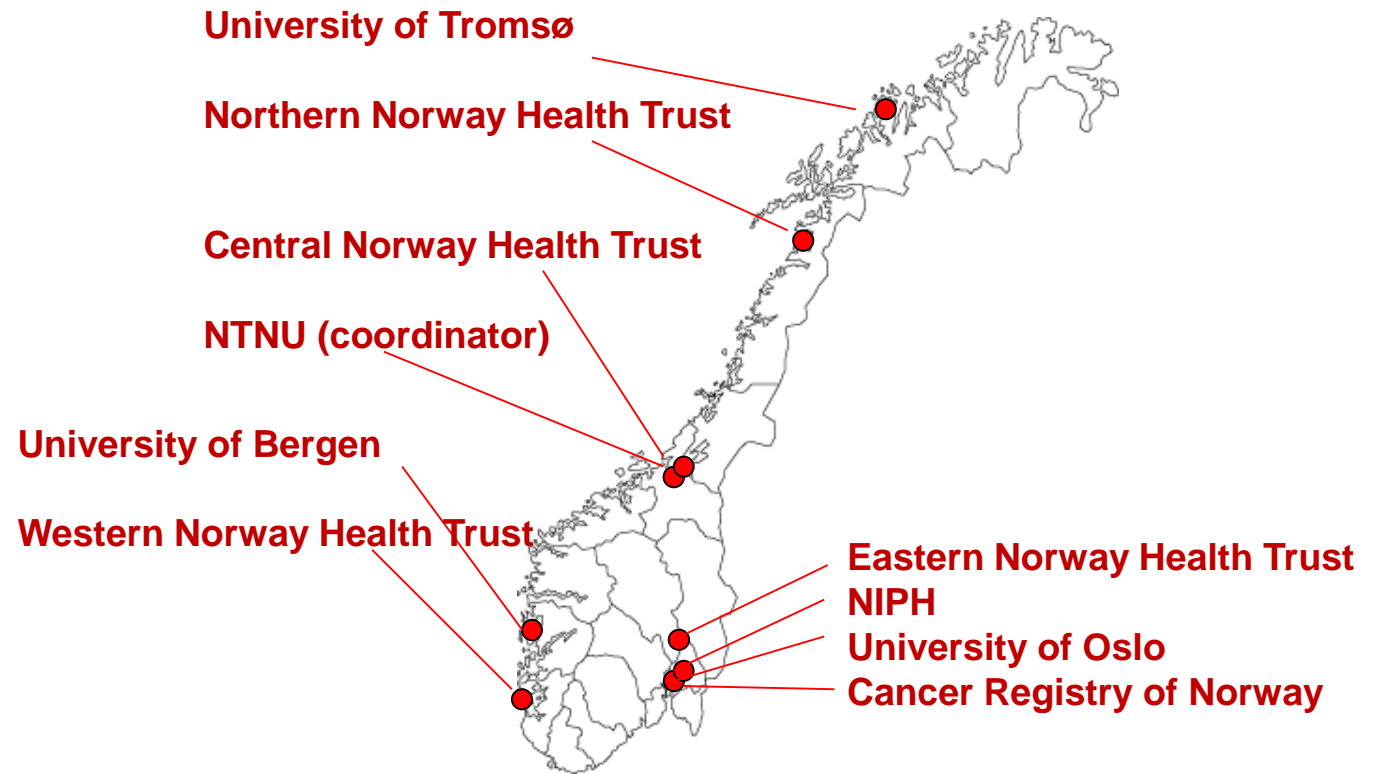




## A National Biobank Infrastructure since 2010



With funding from  
**The Research  
Council of Norway**



Funded with 215 MNOK by the Research Council of Norway

# Biobank classification

- Clinical
  - Diagnostic (e.g. FFPE tissue samples)
  - Therapeutic
  - Prospective
- Population based
  - Cross sectional
  - Longitudinal/prospective

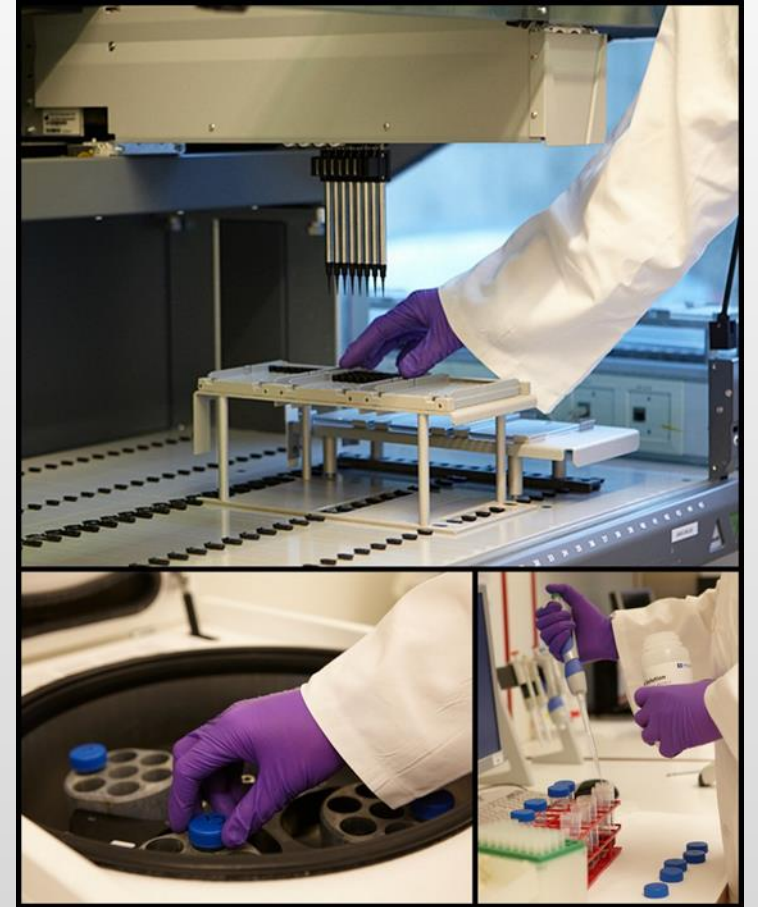
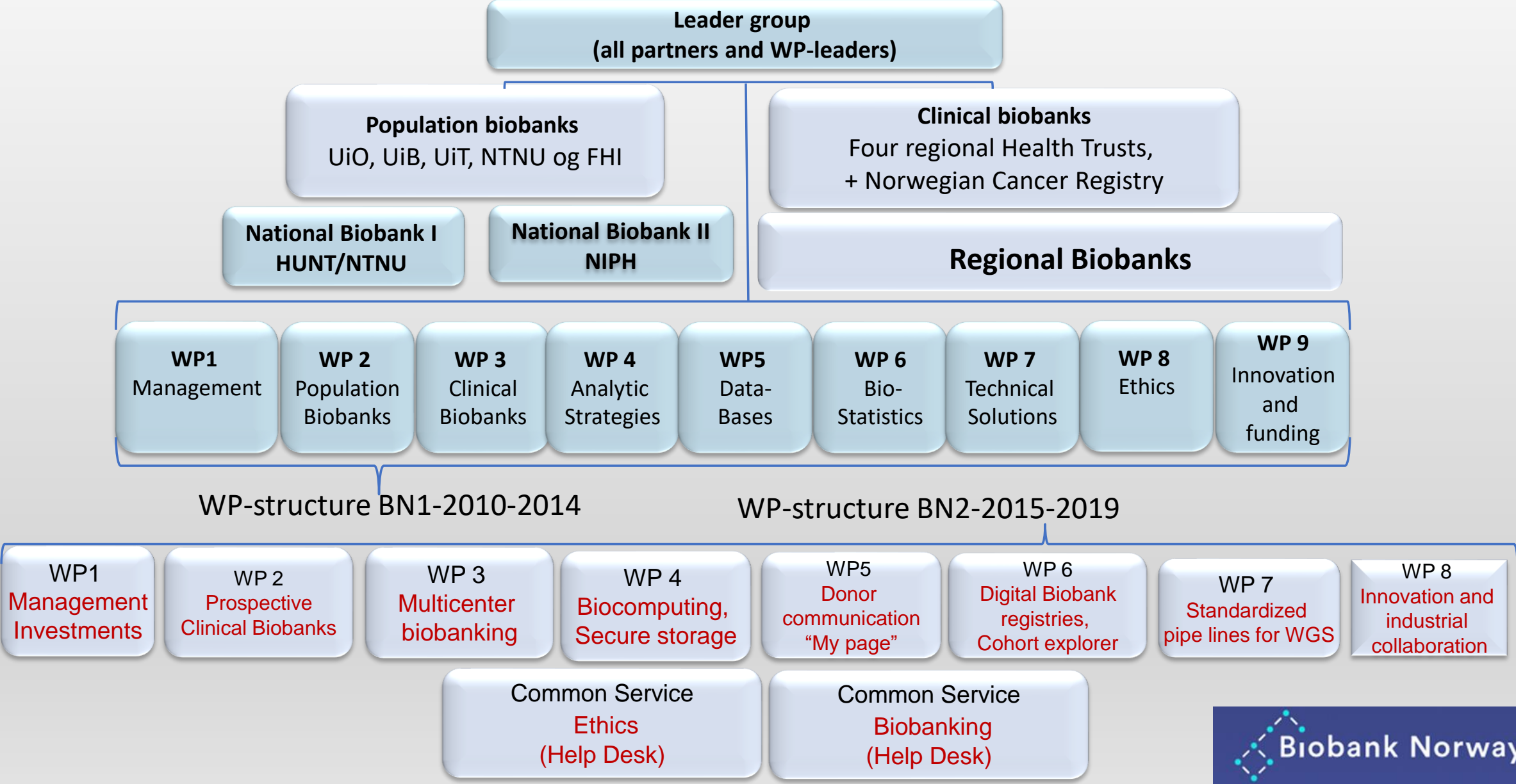


Photo: NIPH

# Biobank Norway/BBMRI.no – organization and WP-structure



# Beste praksis for norske biobanker



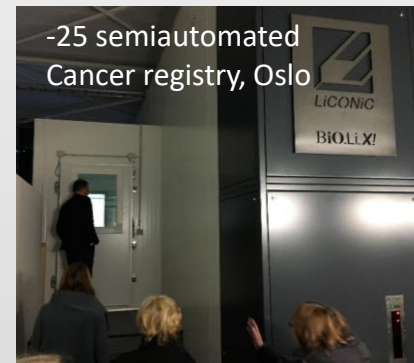
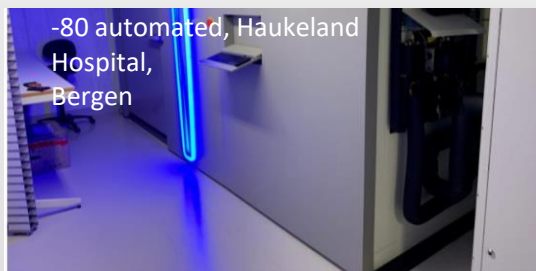
- *En nasjonal biobankinfrastruktur*

*Andre utgave, versjon 2.1*





# Investments in large scale automated storages systems, BN1 and BN2



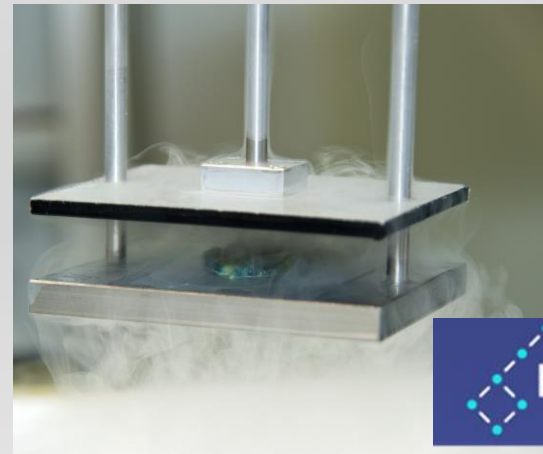
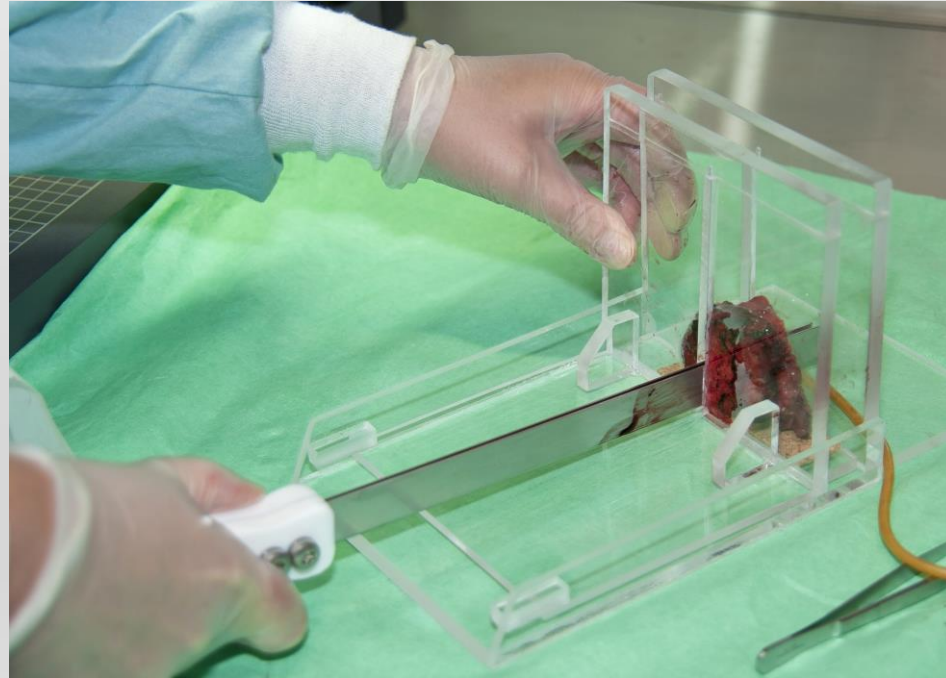
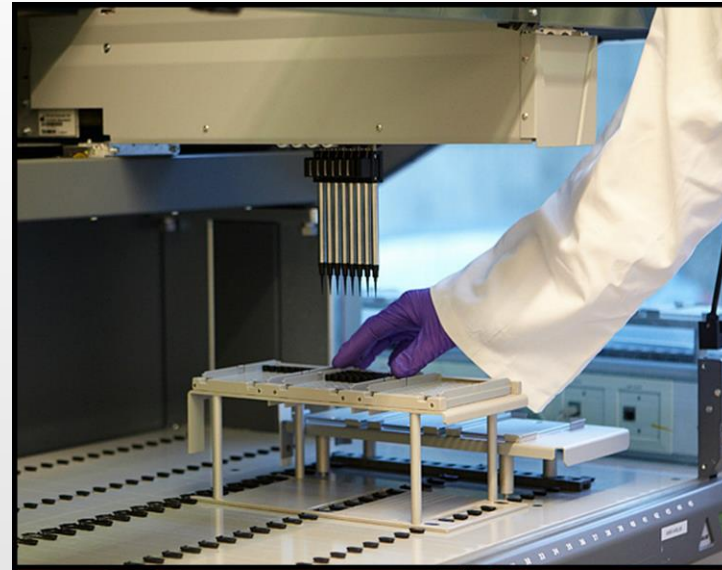


Photo: Biobank Norway/NTNU/NIPH/Biobank1



# Organization BN3 (2020-2025)

Long term financing of key positions on a national level for

- Coordination
- Quality Management
- IT
- Operation manager and WP5 lead

Management, Investments **WP1**

Prospective clinical biobanking **WP2**

Multi centre biobanking **WP3**

Digital biobanking **WP4**

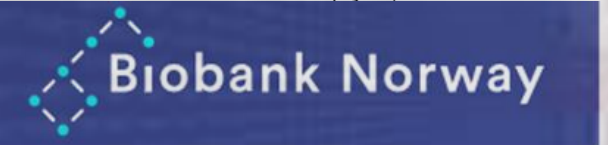
Precision medicine **WP5**

Donor communication **WP6**

Quality biobanking **CS1**

Ethical, Social, Legal Issues (ELSI) **CS2**

Computational biobanking **CS3**



# BN3

- Sample Quality Manager

## **SAMPLE QUALITY MANAGER:**

- Build a national network of sample quality persons involving all partners
- Outgoing work and acting as a service desk and problem solver for sample QC related matters locally and communicate solutions nationally
- Disseminated actively best practice to all BN3 partners
- Collaborate with similar Nordic and International initiatives
- ★ Promote and initiate accreditation and certification based on the new biobank ISO-standard
- Involved in new protocols for sample handling, in particular in WP2 and WP3
- Participate in BBMRI-ERIC QC working groups
- Initiate and lead new quality studies

- CS1 Quality biobanking

Objectives: 1) Introduce common quality standards among biobanks in Norway 2) Increase the number of certified biobanks 3) Arrange regular workshops educating biobank staff in quality issues/ SOPs 4) Perform quality studies to obtain evidence based knowledge regarding pre-analytic variables and analyte stability

# ESFRI European Strategy Forum of Research Infrastructure

- European roadmap for research infrastructures for Biological and Medical Sciences
- **ERIC**- European Research Infrastructure Consortium (legal entity)
- **BBMRI** (Biobanking and BioMolecular resources Research Infrastructure)
- **BBMRI-ERIC**
- **13 ERICs in total**
  - EATRIS-ERIC
  - ECRIN-ERIC
  - CLARIN-ERIC
  - ESS ERIC
  - Euro-Argo ERIC
  - ESS-ERIC
  - CERIC-ERIC
  - DARIAH-ERIC
  - JIV-ERIC
  - ICOS-ERIC
  - SHARE-ERIC
  - EMSO-ERIC



# BBMRI-ERIC

- European research infrastructure for biobanking
- Established Dec-2013 – 19 member states
- Expertise, services and tools (IT, ELSI, Quality)

## **bbmri.no**

- Observer state of BBMRI-ERIC since 2013
- Full member state of BBMRI-ERIC since 2016





# BBMRI-ERIC QUALITY



## KNOWLEDGE HUB

- Help desk



## TRAINING & SUPPORT

- Web conference series ISO 20387:2018
- Courses/WS
- Best practice

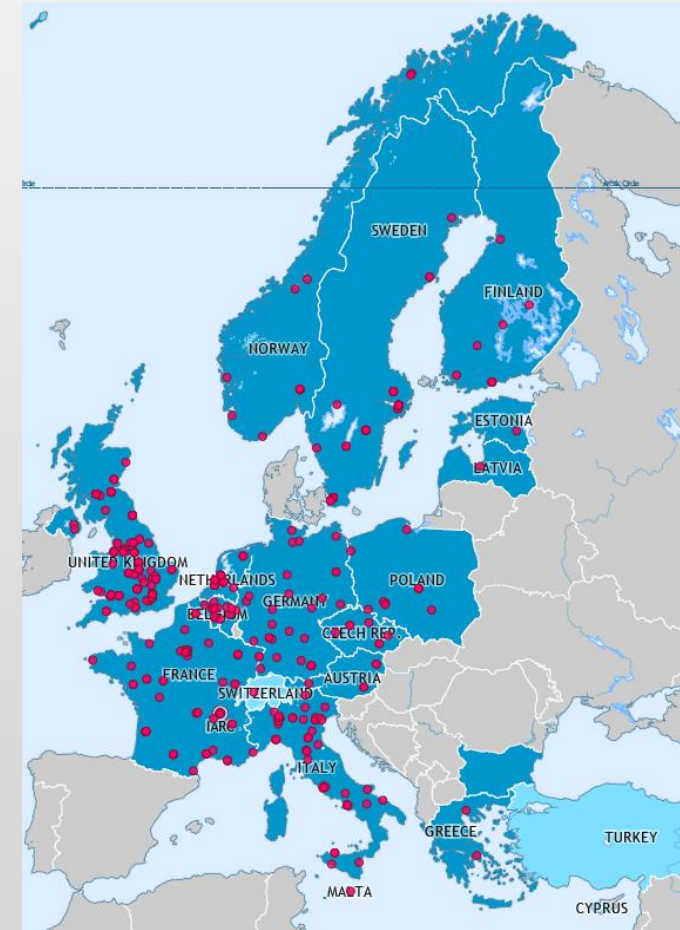


## AUDITING

- Self-Assessment Survey

# BBMRI-ERIC Directory

- World`s largest biobank catalogue
- Search samples and data sets – identify candidate biobanks
- Q-tag



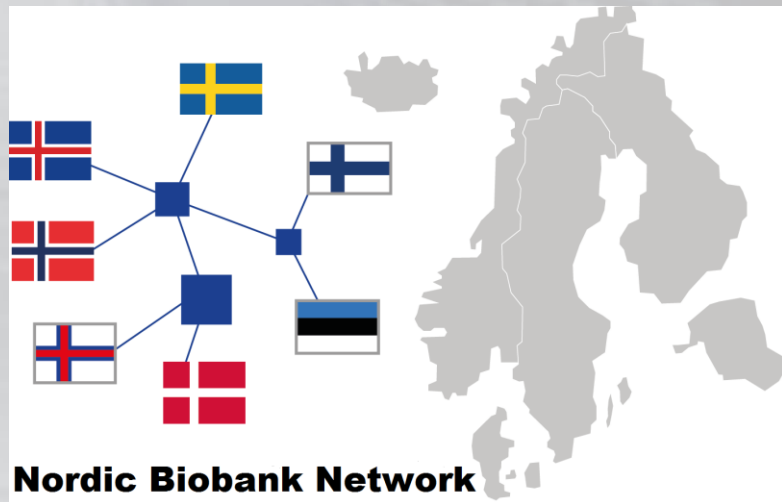
Collection	Type	Materials	Standards	#Samples
<b>Collection all Samples</b>	Other	Other		100.000 - 1.000.000

<b>Interdisciplinary Bank of Biomaterials and Data Würzburg</b> ISO-9001 ✓		<b>Collection types:</b> Cross-sectional, Hospital, Longitudinal, Quality control, Sample collection, Disease specific, Cohort, Population-based <b>Juridical person:</b> University Hospital Würzburg		
Collection	Type	Materials	Standards	#Samples
<b>Collection Broad Consent Würzburg</b>	Cross-sectional, Hospital, Longitudinal, Quality control, Sample collection	Plasma, Serum, Tissue (frozen), Tissue (paraffin preserved), Urine, Whole Blood		10.000 - 100.000
<b>Collection Diabetic Cardiomyopathy Würzburg</b>	Cross-sectional, Disease specific, Hospital, Longitudinal, Quality control, Sample collection	Serum, Whole Blood		1000 - 10.000



## Nordic Biobank Network



- Established in February 2010 – supported by NordForsk, a federation of the Nordic Research Councils, to consolidate and further develop the Nordic biobank collaboration
- Includes Sweden, Norway, Finland, Denmark, Iceland, the Faroe Islands and Estonia
- Lead by Biobank Norway since 2014

➤ <https://bbmri.no/>

➤ <http://www.bbmri-eric.eu/>

